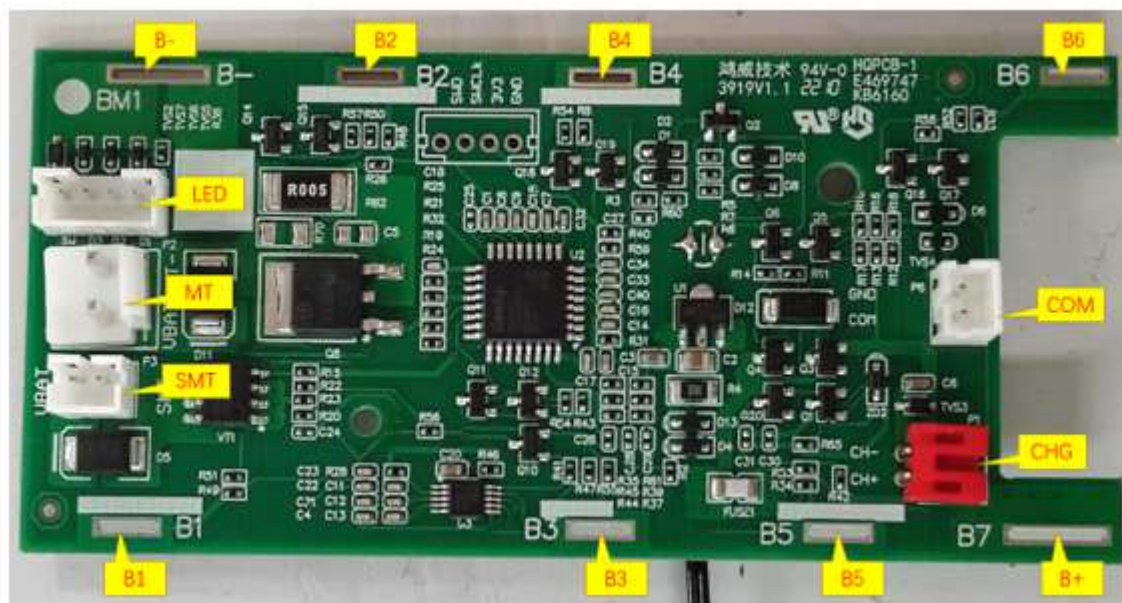


Wiring diagram VC3919AC-GS

BMS board (part of battery assembly):



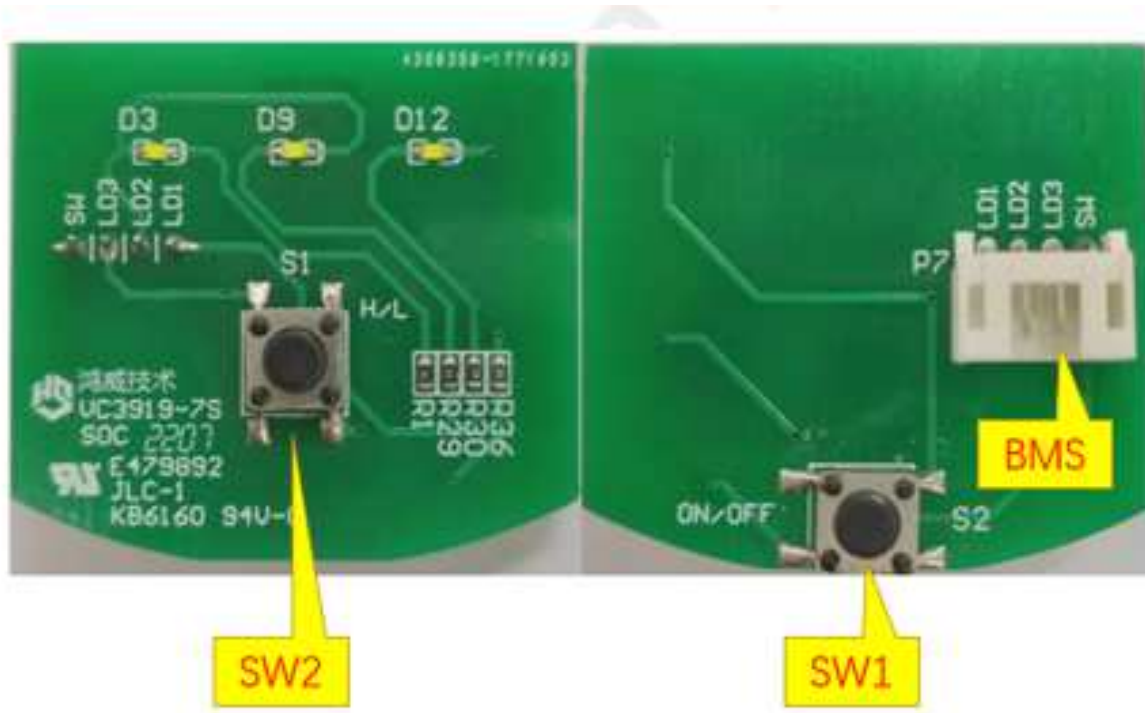
The external interface of the main PCBA of the battery pack is shown in the following table:

Contact	Details
B-	Connect to Negative Side of Cell 1.
B1	Connect to Positive Side of Cell 1.
B2	Connect to Positive Side of Cell 2.
B3	Connect to Positive Side of Cell 3.
B4	Connect to Positive Side of Cell 4.
B5	Connect to Positive Side of Cell 5.
B6	Connect to Positive Side of Cell 6.
B+	Connect to Positive Side of Cell 7.
CHG	Connect the charger
LED	Connect to the display board.
SMT	Connect the brush motor.
MT	Connect the main motor.
COM	Communication interface.

Note: The power-on sequence requirements are as follows:

First go to B-, then connect B1, B2, B3, B4, B5 in turn, and finally connect B+

Switch board:



The external interface of the display board is shown in the table below:

Symbol	Details
SW2	Speed control button
SW1	Power button
BMS	Connect the motherboard